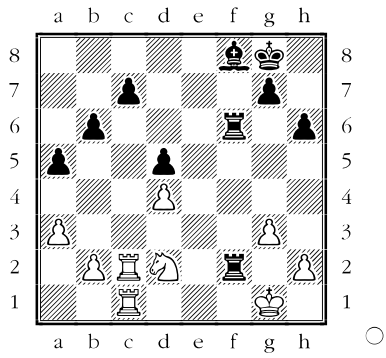


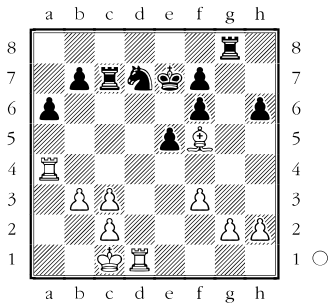
Zwischenzug



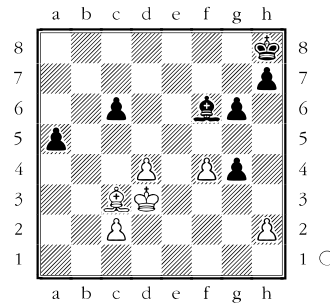
In einer vermeintlich erzwungenen Zugfolge wird an Stelle eines erwarteten Antwortzuges ein anderer stärkerer Zug gespielt.

1. ♖e4 ♜xc2 (sonst Qualitätsverlust) 2. ♕xf6+ (Zwischenzug) 2...gxf6 3. ♜xc2 gewinnt einen Turm für den Springer.

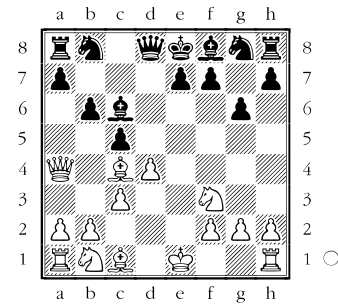
1



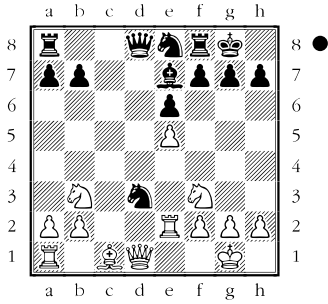
4



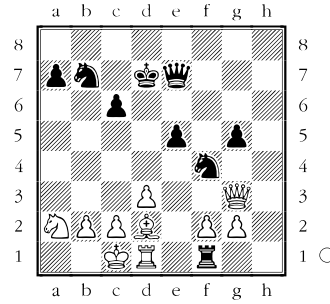
7



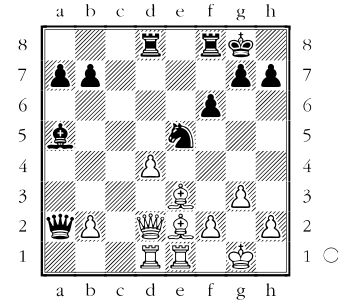
2



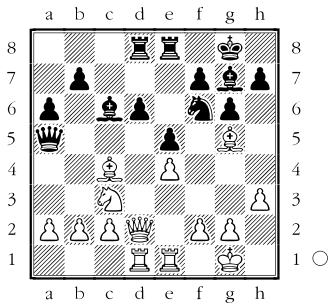
5



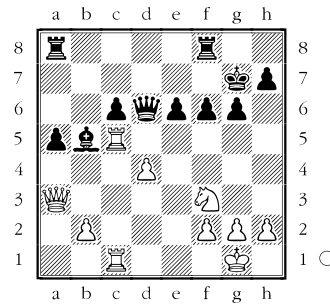
8



3



6



9

