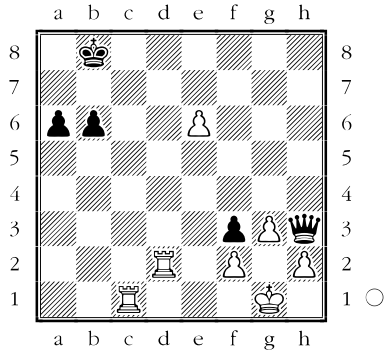


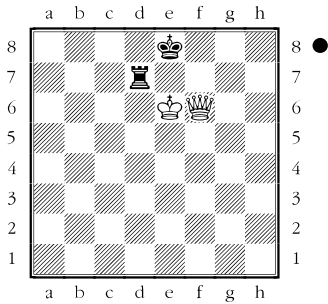
Unentschieden, Dauerschach, Patt



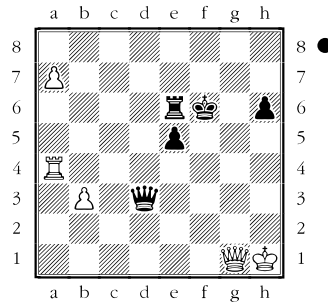
Manchmal kann in einer sonst verlorenen Stellung durch ein Patt, ein Dauerschach oder ähnliche Mittel ein Unentschieden erzwungen werden.

Schwarz droht Matt auf g2. Weiss rettet sich mit 1. ♖d8+ ♜b7 2. ♖d7+ ♜b8 3. ♖d8+ ♜b7 etc. Dauerschach.

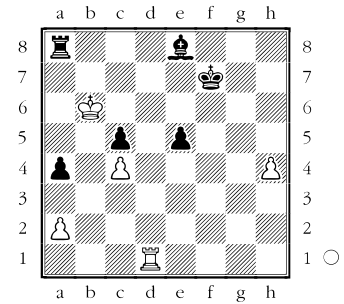
1



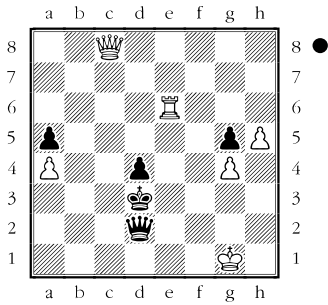
4



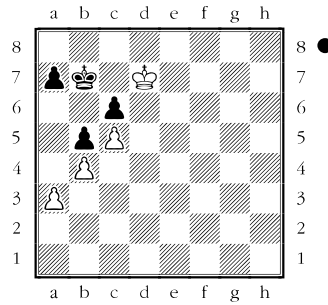
7



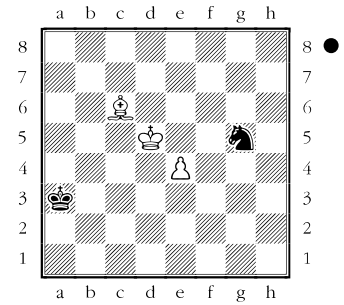
2



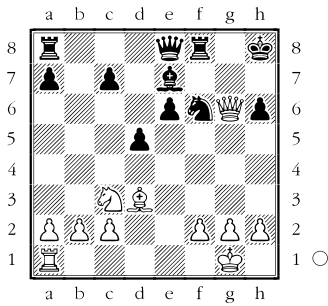
5



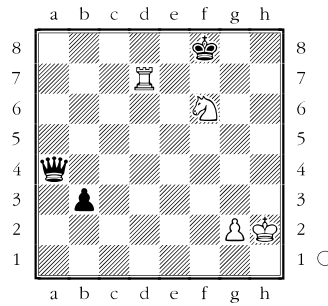
8



3



6



9

