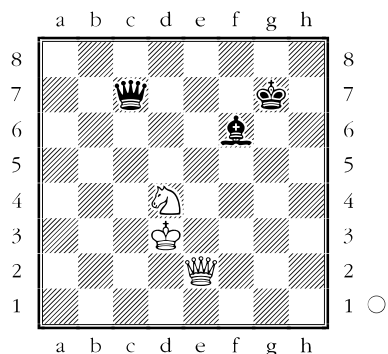


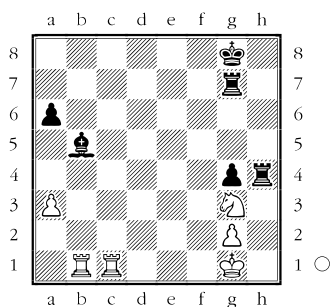
Gabel



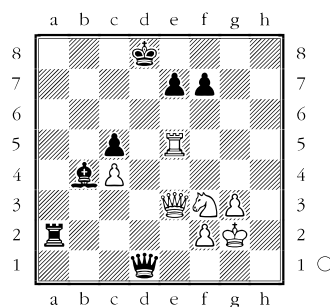
Die Gabel ist eine spezielle Form eines Doppelangriffs. Eine Figur bedroht gleichzeitig zwei gegnerische Figuren.

1. ♖e6+. Springer-Gabel! Schach (Angriff auf den König) und gleichzeitig Angriff auf die Dame.

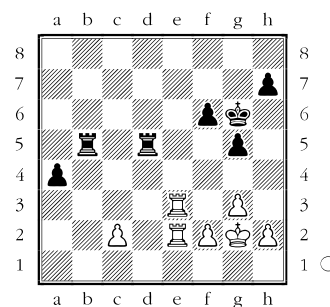
1



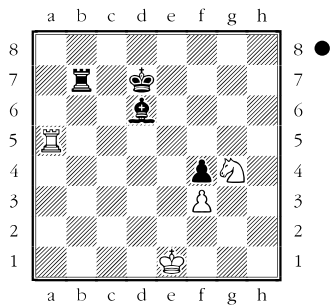
4



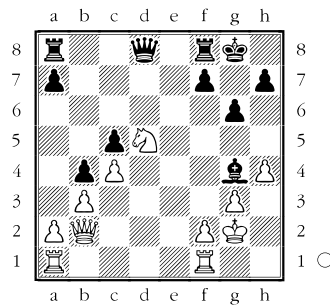
7



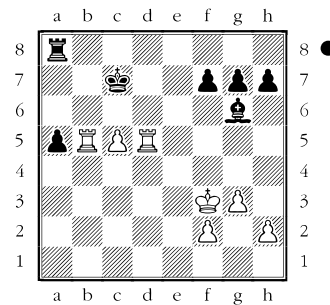
2



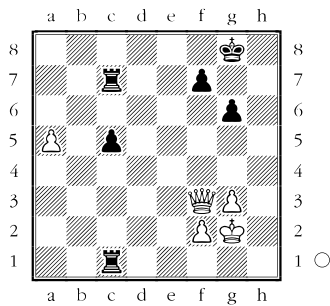
5



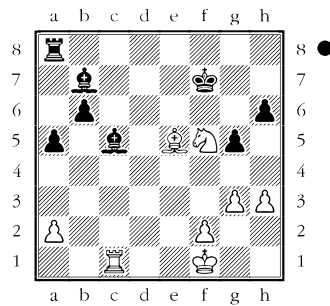
8



3



6



9

